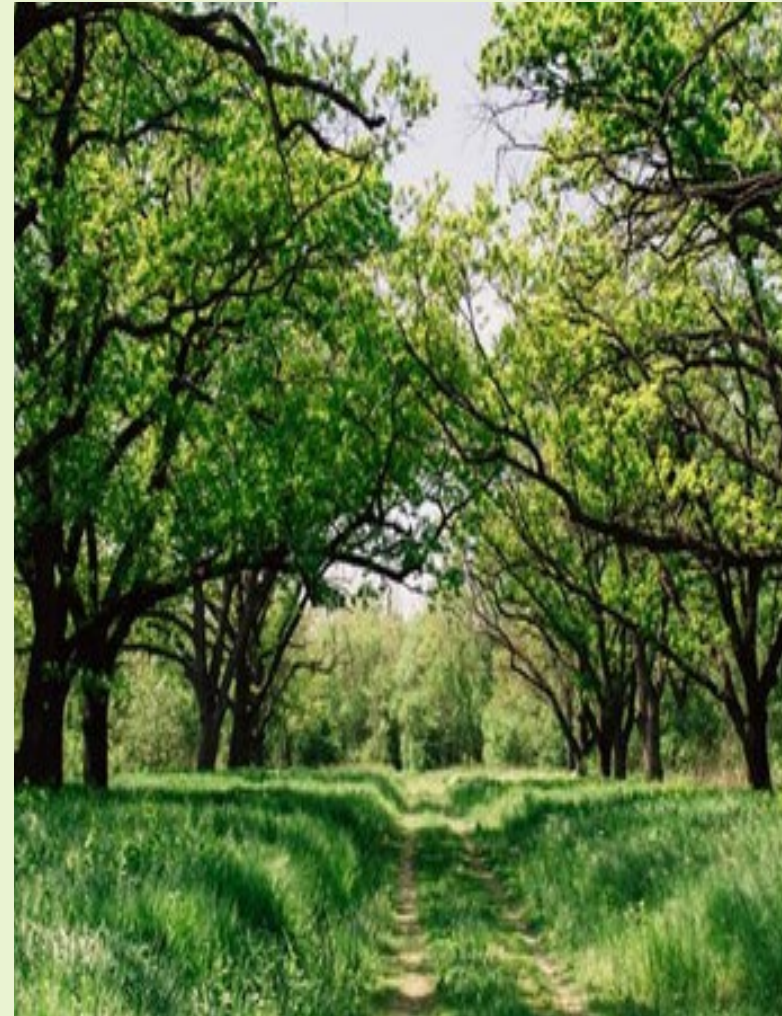


## Welcome to your latest Biomass Suppliers List (BSL) Newsletter

Please find the BSL April issue containing the latest news and updates on policy changes, statistics, and ongoing developments and improvements within the Scheme.

We always like to hear from you. If you have any feedback on this edition or ideas for future newsletters, please email [BSLHelpdesk@gemserv.com](mailto:BSLHelpdesk@gemserv.com).

[Homepage](#)[BSL Reminders](#)[Key Updates](#)[Meet the Team](#)[Scheme Success](#)[Statistics](#)[Contact Us](#)

## BSL Reminders

### Updating your contact details on your BSL Account

We are continuing to run the usual BSL Helpdesk service (phone line open Monday – Friday from 10am – 2pm). Please send your enquiry to [BSLHelpdesk@gemserv.com](mailto:BSLHelpdesk@gemserv.com) and a response will be provided within five working days.

As part of your ongoing obligations in being a member of the BSL Scheme, we require you to keep your contact details up to date on your account so that we can contact you.

If you are the Master User of your BSL account, you can update your details by logging in and clicking the ‘Users’ option when you log in (shown in the first image below). You can then select ‘Edit’ as shown in the second image below and update your contact details.



We would also recommend that if you are listed on our [“Find a Fuels”](#) page that you check your details are correct. We have **received feedback from Renewable Heat Incentive (RHI) customers** that some BSL supplier contact details are not up to date and that there has been some difficulty in contacting suppliers in their local area.

We have received 18,122 views on the site from April 2020-2021. To ensure that customers can reach you and you benefit from being listed on the BSL site, please make sure you keep your details up to date.

If you wish to update your contact details so that RHI customers are able to purchase woodfuel from your company, please contact [bslhelpdesk@gemserv.com](mailto:bslhelpdesk@gemserv.com).

## Payments

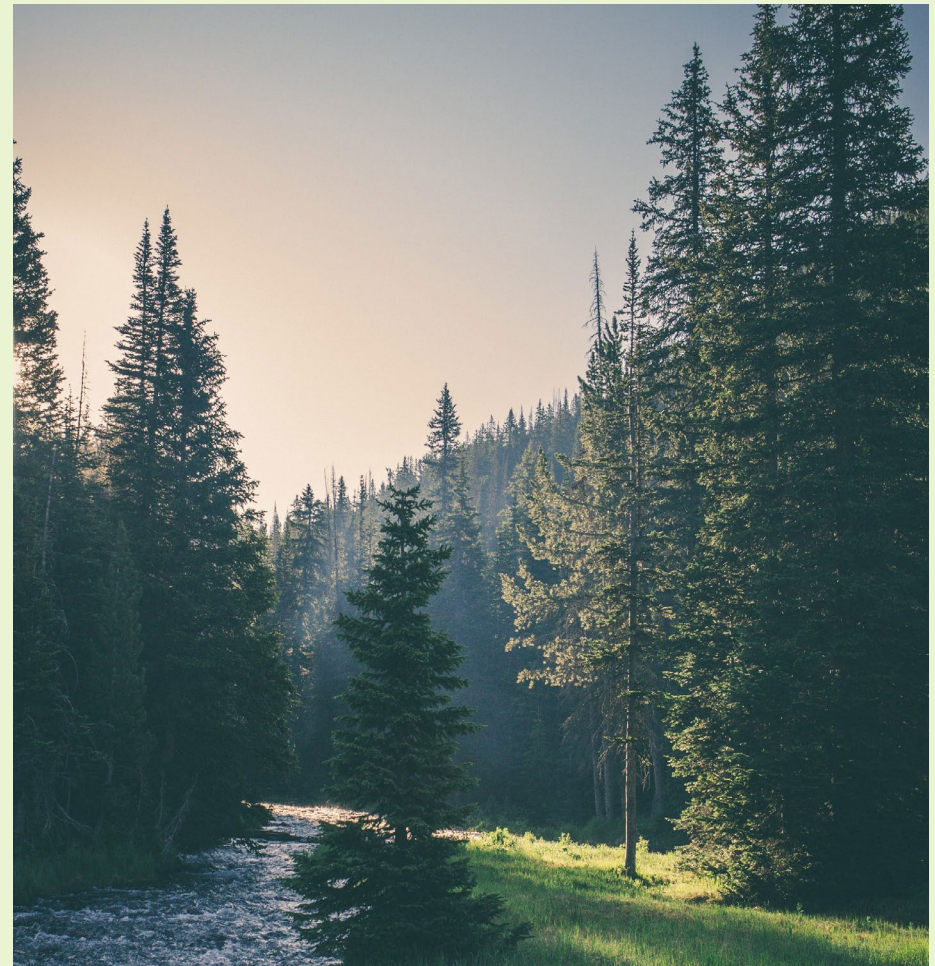
### Q1 2021 Payments for Producers, Producer-Traders and Traders due

If you have not done so already, Producer-Traders, Producers and Traders are required to submit their total amount of woodfuel sold for Q1 2021 between 01/01/2021 and 31/03/2021.

Please provide this information for each of your approved fuels on the BSL.

To ensure your authorised fuels continue to be included on the BSL, all suppliers are required to submit their quarterly reporting data and/or pay their membership fees.

Firstly, click [here](#) to login to your BSL account under the 'Registered Suppliers' section of the BSL website. Then, click on the quarterly reminder, 'Quarterly Report is now due'.



1

2

Homepage

**BSL  
Reminders**

Key  
Updates

Meet the Team

Scheme  
Success

Statistics

Contact Us



## BSL Enquiry - Brexit - Impact on Biomass Supply Chains

The BSL Administrator has produced a short survey to ask suppliers for their feedback on the impact of Brexit on the biomass industry. This will inform the BSL Administrator, the Advisory Panel and BEIS as to the level of impact Brexit has had on the industry.

The survey can be accessed [here](#).

We thank you for your time and feedback.

## UK Timber Regulations Update

As of 1st January 2021, EU Timber Regulations has been replaced with the UK Timber Regulations (UKTR) in England, Scotland and Wales. Northern Ireland will remain subject to the European Timber Regulations.

The requirements under the UK Timber Regulations are similar to EUTR but with one significant difference. If a joinery business imports timber from the EU (receiving invoices for timber from a company based in the EU), it will now incur the responsibilities of an 'Operator' under the Regulations. Companies will have to undertake due diligence to show that there is no risk of the timber imported having been illegally harvested. This effect will mainly impact companies procuring own supplies of timber from EU products.

Should you like to find out more please visit: <https://www.gov.uk/guidance/regulations-timber-and-flegt-licences>.

## Non-Domestic and Domestic RHI Scheme Closure

The Non-Domestic RHI Scheme closed to new applicants on the 31st March 2021, and the Domestic RHI Scheme closes to new applicants on the 31st March 2022.

We have received a few queries regarding whether suppliers will need to demonstrate they have a BSL approved fuel at the point in which their RHI application is made.

If the fuel a supplier uses for their biomass installation is not yet accredited on the BSL, they can still apply for accreditation to the RHI within the deadlines listed above. However the supplier will be required to self-report on the sustainability of the fuel they are using by submitting a [Fuel Measurement and Sampling questionnaire](#) (FMS). The full guidance on this is given in Ofgem's [Sustainability Self-Reporting](#) guidance document.

After a suppliers' fuel has been accredited to the BSL, they can notify Ofgem by emailing [rhi.notification@ofgem.gov.uk](mailto:rhi.notification@ofgem.gov.uk). After an amendment to an application, a supplier will be able to demonstrate compliance with their sustainability requirements with a valid BSL number.

It is simpler for a supplier to apply to RHI schemes with an approved BSL number but it does not prevent a supplier from applying. Any supplier who intends to self-report for the period between the date they submit their application and the date at which their fuel is accredited to the BSL, they will need to email Ofgem with their RHI number and postcode which notifies them of this intention.

## Fuel Quality Standard for biomass

BSL Advisory Panel responded to Section 7 Fuel Quality Standard of [Ofgem Draft Guidance on Non-Domestic RHI Closure](#). There is conflicting guidance across Part B, Medium Combustion Plant Directive (MCPD), and Industrial Emissions Directive (IED) as to whether waste wood containing hydrocarbons and heavy metals can be burned in a given scenario. Panel Members advocated that obtaining a valid permit for waste wood overrides requirement to comply with woodfuel standards and that fuel quality standard for waste wood is not required.

Following a Non-Domestic RHI Closure Event held on 2nd March 2021, Ofgem answered questions raised during the event. Within these answers, Ofgem confirmed the criteria for woodfuel quality applies to solid biomass (excluding solid biomass contained in waste) which is woodfuel and is used to generate heat in an accredited RHI installation. The criteria defines 'woodfuel' as woodchip, logs, wood pellets and wood briquettes, regardless of whether the wood will undergo any other process before burning.

Ofgem also confirmed that solid biomass which is waste, or is wholly derived from waste will not be required to meet the woodfuel quality criteria.

## BSL Land Criteria Update

A change to the Land Criteria evidence required from BSL suppliers came into play in January 2021. This will affect any applications wishing to buy raw materials/woodfuel from any country with less than 100/100 from the [NEPCon Sourcing Hub](#).

We will now only be accepting Category A evidence for those countries with less than 100 Timber Risk Score from the NEPCon Sourcing Hub.

This may affect your application if you purchase timber (as a raw material) or woodfuel from a country deemed high risk/less than 100 Timber Risk Score. Please check the countries you are sourcing from do not have a risk timber score of less than 100 on the NEPCon Sourcing Hub as this may affect your applications you may need to reapply to the BSL with the appropriate evidence to support your woodfuel.

If you have a current approved application which does not comply with the above, you have until the 30th June 2021 to ensure you are compliant and avoid being removed from the list.

We have created a leaflet to explain the changes and how it affects different suppliers. To access the leaflet please click [here](#).

## Meet the Team: Louise Forrest



My name is Louise and I have been working in the BSL Administrator team for over two years. I have over 13 years' experience working on Government led contracts within the Renewable and Environmental sector and specialise in compliance and enforcement.

I am the first point of contact for suppliers applying to the scheme, my role is to review and process applications, manage helpdesk queries and phone calls. I provide advice to companies/individuals who are

interested in becoming BSL suppliers. I really enjoy interacting with BSL suppliers to support them with any questions or queries they may have through the helpdesk and I strive to provide a first class service.

It is important to me that I work for a company and on projects that are committed to reducing our impact on the environment. Gemserv have achieved a CarbonNeutral® status and leads on projects that are key to a clean energy system, working collaboratively with our clients to help them with the transition to a net zero world. Working at Gemserv and on schemes such as the BSL has further reinstated my passion for living a more sustainable life ensuring that I buy unpacked fruit and vegetables, reducing chemical cleaners, going paperless and volunteering for environmental charities.

Thank you for taking the time to find out a bit more about me. I look forward to continuing to work with you all. If you have any questions about applications, accounts and payments please do not hesitate to get in touch and ask for Louise!

## BSL Scheme Success and Support

According to [Energy Savings Trust](#), using a wood-fuelled biomass boiler could save up to £960 a year compared with an older electric heating system and up to 14.3 tonnes of carbon savings a year.

Latest figures for 2019 showed renewable heat generation increased by 2.4% with biomass accounting for 59% of this increase, underlining the contribution of biomass to decarbonisation. There is potential for biomass, large scale deployment of biomass has the capacity to provide up to 15% of UK's primary energy demand by 2050.

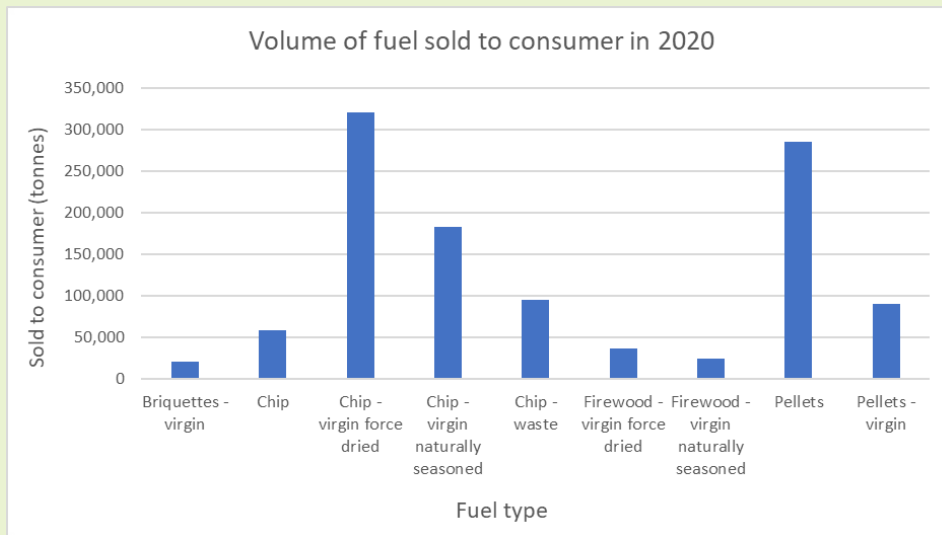
In 2014, the BSL scheme was established to ensure RHI payments were only made to biomass boiler operators, burning fuels such as logs, woodchips, pellets and briquettes – that meet certain sustainability and legal requirements. BSL suppliers must demonstrate their fuel is at least 60% less carbon intensive than the average EU fossil fuel equivalent. Since 2014, BSL has had more than 23,000 fuel applications with more than 8,000 fuels currently listed on the register.

Please see the Table 1 below which outlines the BSL scheme activity:

	Number of fuels supported on the BSL	Number of supplier enquiries supported by the BSL Administrator (email/telephone)	Tonnes of sustainable woodfuel sold (According to quarterly declarations)
<b>2017</b>	10,738	8,083	2,222,827
<b>2018</b>	10,149	6,336	2,382,517
<b>2019</b>	9,205	5,546	2,759,648
<b>2020</b>	8,716	8,836	2,235,941
<b>2021 (Q1-Q3)</b>	8,508	2,389	36,418

Graph 1 shows the total number of fuels sold to consumers in 2020 broken down by fuel type. Graph 2 shows number of fuels sold to industry in 2020, broken down by fuel type. Please note fuel types with less than 10,000 tonnes sold have been removed from both graphs.

**Graph 1**



**Graph 2**

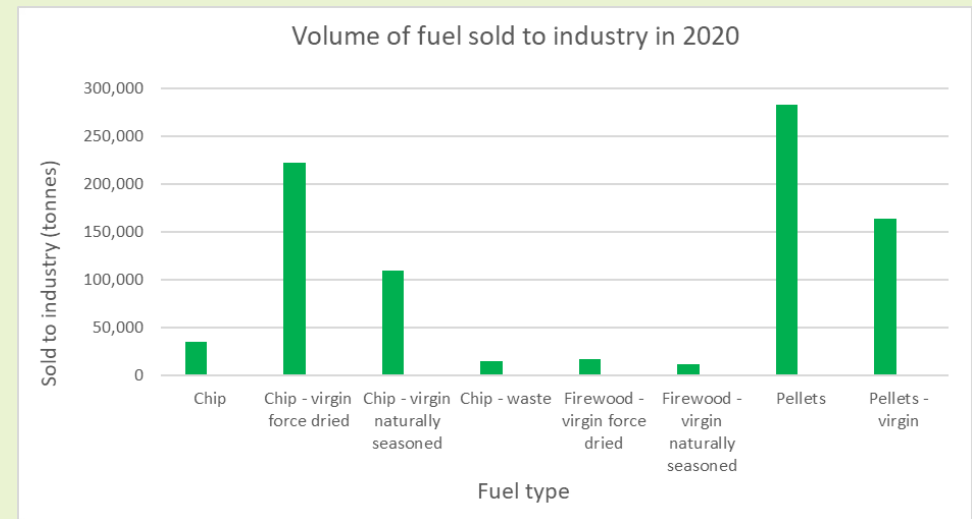


Table 2 presents the total number of BSL authorised suppliers in April 2021 by supplier type.

**Table 2**

Product-Traders	3,087
Producers	263
Traders	2,043
Self-Suppliers	3,115



## BSL Audits

Audits aim to validate a supplier’s ongoing eligibility to gain or retain its status as BSL authorised. To ensure you are following your ongoing BSL obligations, records must be kept and comprehensive documentation must be made available during a BSL audit. The full list of required documents is available on your authorisation letter and within the [Applications and Audit Guidance](#).

The table below presents the total numbers of audits carried out in 2021, in addition to the total numbers of fuel removals due to Non-Compliances at an audit.

	Number of Desk Based Audits	Number of Site Audits	Major Non-Compliance Identified at audit*	Fuels Audited	Fuels Removed from Audit	Fuels Removed from BSL
<b>January</b>	24	1	5	25	7	79
<b>February</b>	23	7	13	30	3	72
<b>March</b>	26	11	7	37	6	260**

\*Due to supplier request for removal, duplicated application, parent fuel removed, non-payment.

\*\*BSL Administrator conducted a non-payers campaign in which BSL numbers were removed at the end of the quarter if they did not pay outstanding fees.

## Newsletter Feedback?

Please send your thoughts to [BSLhelpdesk@gemserv.com](mailto:BSLhelpdesk@gemserv.com)

### Contact the Biomass Suppliers List for further information

8 Fenchurch Place,  
London,  
EC3M 4AJ

**+44 (0)20 7090 7769**  
(Mon-Fri 10-2pm)

[BSLHelpdesk@gemserv.com](mailto:BSLHelpdesk@gemserv.com)

[biomass-suppliers-list.service.gov.uk](http://biomass-suppliers-list.service.gov.uk)